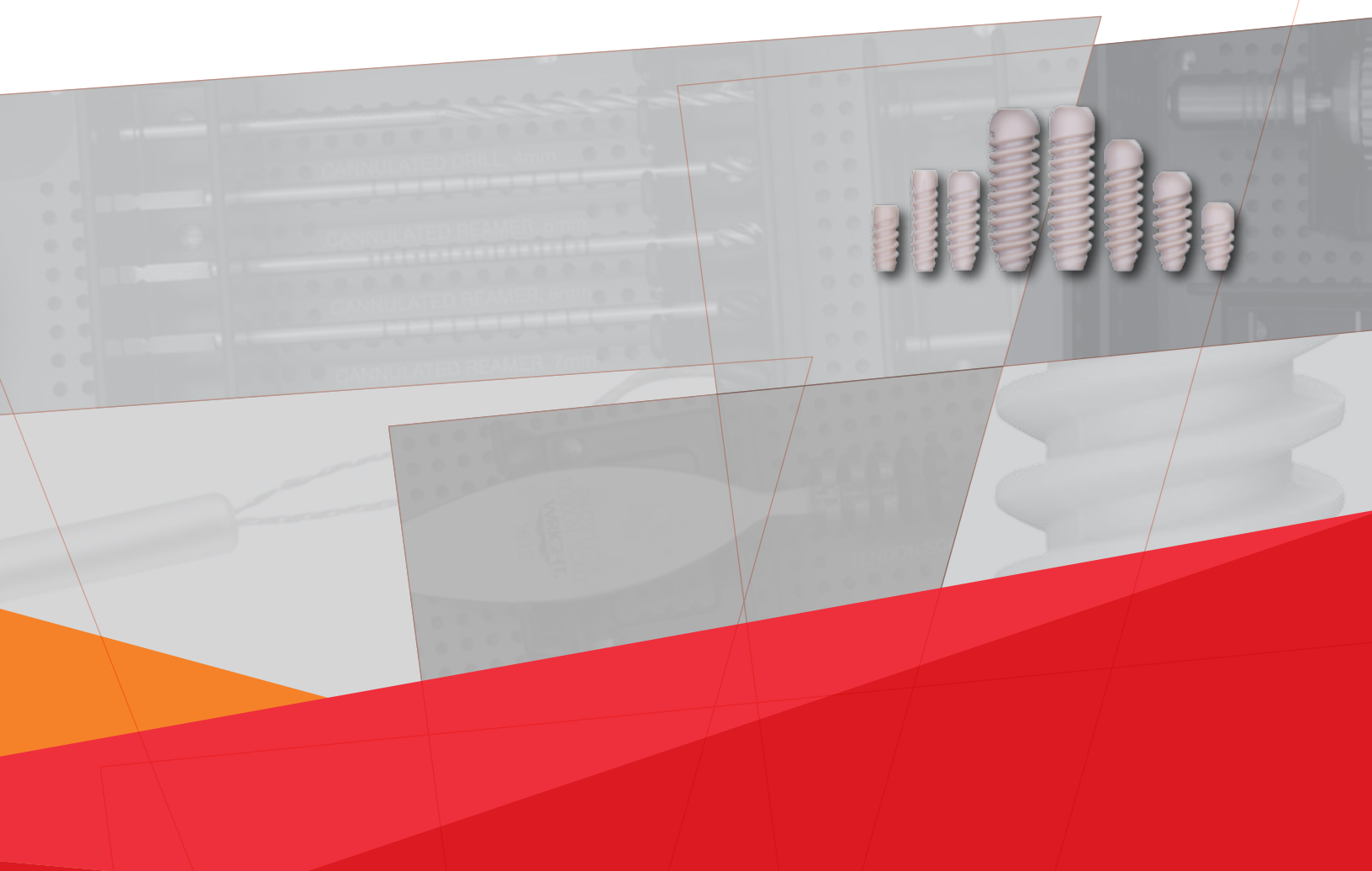


G-FORCE[®]

Tenodesis System

SYSTEM OVERVIEW



Intraoperative Tendon Tensioning
Superior Fixation Strength
Radiolucent Material

Design Surgeons:

Gregory C. Berlet, MD

Hodges Davis, MD

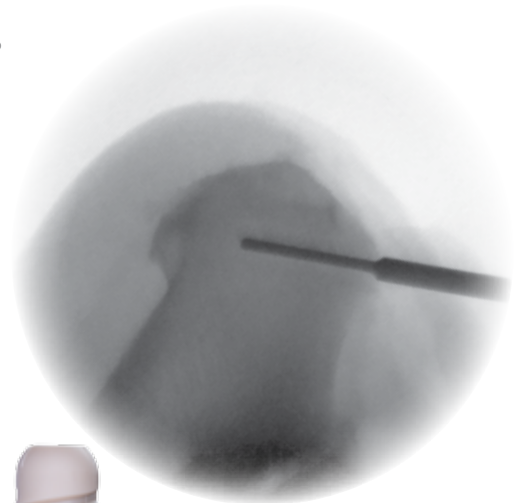
Carroll Jones, MD



Designed by Foot and Ankle Surgeons, for Foot and Ankle Surgery

with Additional Sizes for Rotator Cuff Repair and ACL Reconstruction

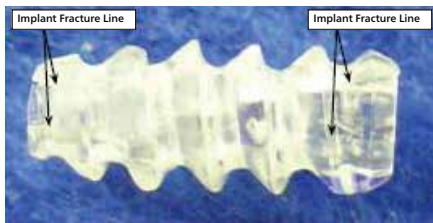
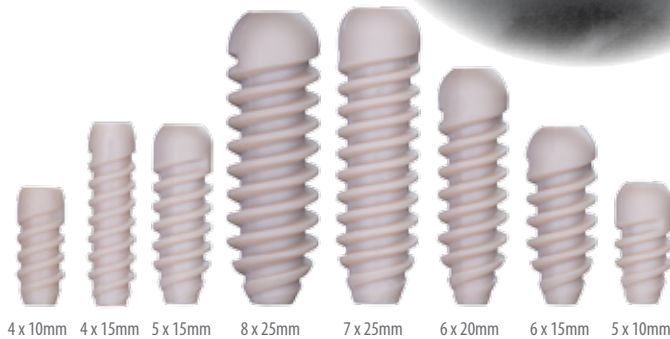
- » Radiolucent PEEK-OPTIMA® material
- » Higher pull-out strength* than the Arthrex® Bio-Tenodesis™ screws
- » Intraoperative tendon tensioning via novel Suture Loop Guide Rod



Higher Pull-Out Strength* and Non-catastrophic Mode of Failure**

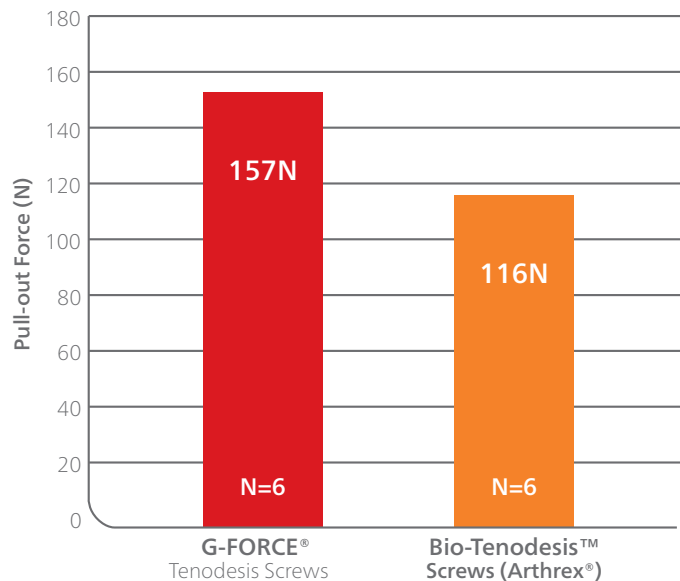


G-FORCE® Tenodesis screw failure by driver slippage and thread deformation.



Arthrex® Bio-Tenodesis™ screw showing failure by implant fracture, which can lead to complete implant failure.

Statistically significant **35%** greater pull-out force* than Arthrex Bio-Tenodesis screws (p<0.002)



*Under simulated clinical conditions. WMT data on file: ER08-0098.
 **Modes of failure were recorded during ultimate torque testing.
 PEEK-OPTIMA® is a registered trademark of Invivo.

System Highlights & Key Features

Cannulated Reamers

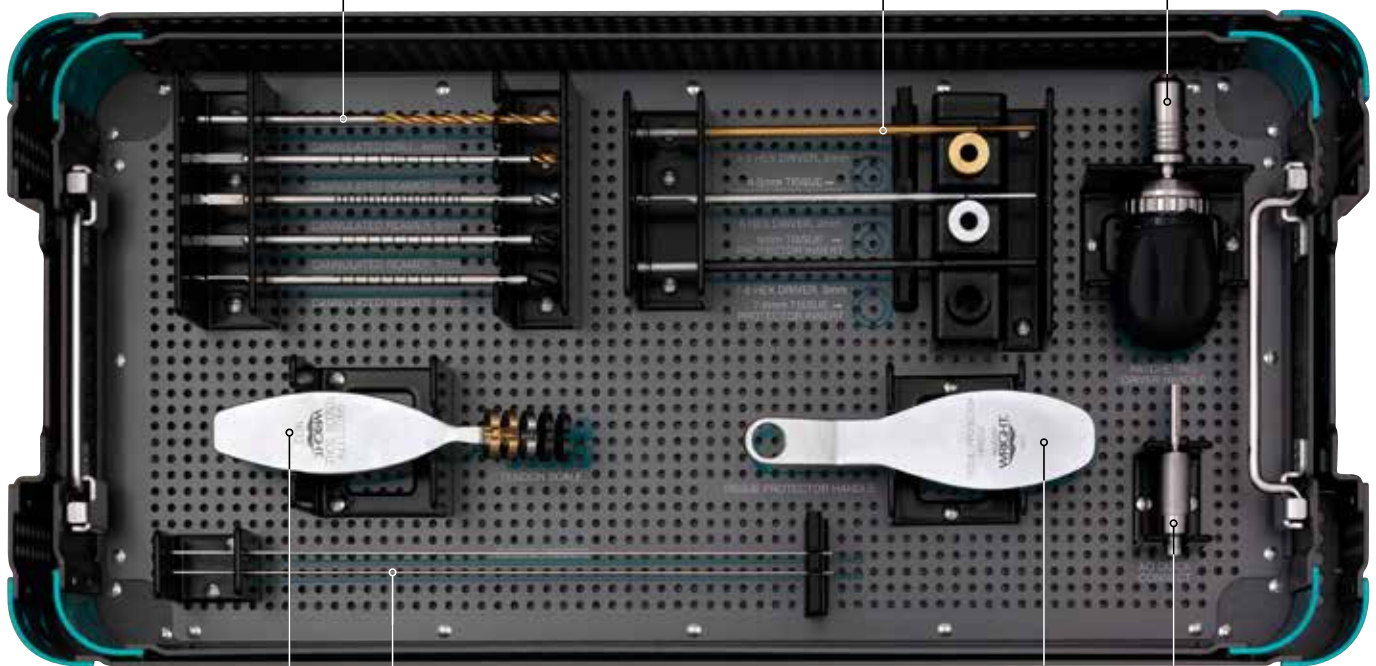
- 4, 4.5, 5, 5.5, 6, 6.5, 7, 7.5, 8 mm
- Drills over the Suture Loop Guide Rod
- Color-coded with tissue protector and drivers

Driver Shafts

- Protruding tip allows easy bone hole location
- Tapering allows snug screw driving with easy driver removal
- Color-coded with tissue protector and reamers

Ratcheting Handle

- Provides fast, easy, smooth screw insertion



Tendon Sizer

- Allows for quick, accurate, consistent tendon measurements
- Color-coded with reamers, drivers, and tissue protectors

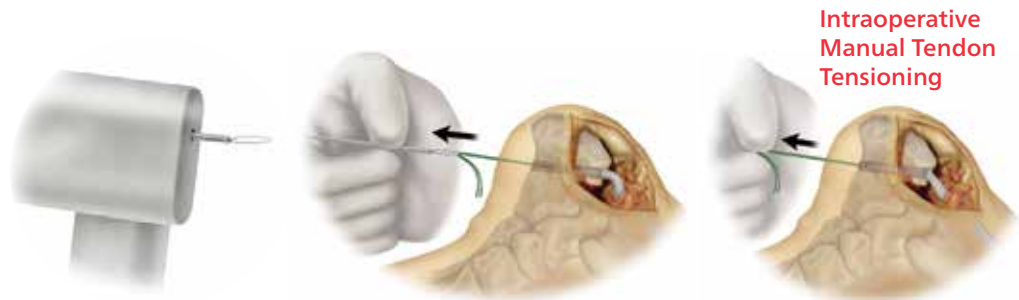
Suture Loop Guide Rod

- Provides guidance for bone hole drilling
- Includes a braided nitinol loop for suture passing
- Ideal for intraoperative tendon tensioning

Tissue Protector Handle

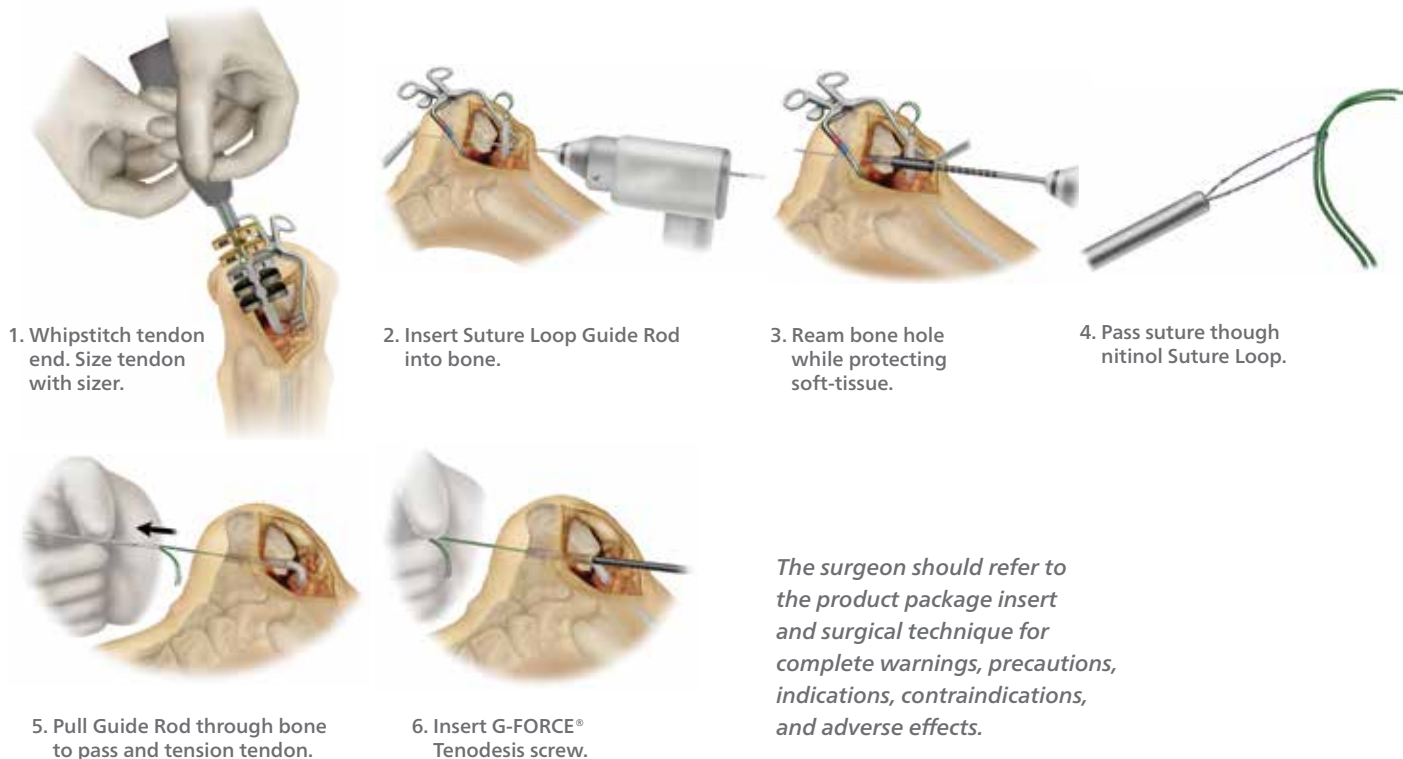
AO Quick Connect

IMPORTANT: Make certain to avoid inserting the Guide Rod too far into wire driver and gripping the nitinol Suture Loop.



Surgical Summary – Tendon Attachment

Flexor Hallisus Longus Transfer



Sizing and Ordering Information

| Tendon Size (mm) | Drill Size (mm) | Driver Part | Implant Size | Part No. | Catalog No. |
|------------------|-----------------|-------------|--------------|----------|--|
| <4 | 4 | 86PS3045 | 4 mm x 10 mm | 86PS0410 | Instrument Kit 86PS1KIT2 |
| | 4 | 86PS3045 | 4 mm x 15 mm | 86PS0415 | |
| 4 | 4.5 | 86PS3045 | 5 mm x 10 mm | 86PS0510 | Consumable Catalog No. Suture Loop Guide Rod 86PS1000 |
| | 5 | 86PS3045 | 5 mm x 15 mm | 86PS0515 | |
| 5 | 5.5 | 86PS3066 | 6 mm x 15 mm | 86PS0615 | |
| | 6 | 86PS3066 | 6 mm x 20 mm | 86PS0620 | |
| 6 | 6.5 | 86PS3078 | 7 mm x 25 mm | 86PS0725 | |
| | 7 | 86PS3078 | 7 mm x 25 mm | 86PS0725 | |
| 7 | 7.5 | 86PS3078 | 8 mm x 25 mm | 86PS0825 | |
| | 8 | 86PS3078 | 8 mm x 25 mm | 86PS0825 | |
| 8 | 8 | 86PS3078 | 8 mm x 25 mm | 86PS0825 | |
| | 8 | 86PS3078 | 8 mm x 25 mm | 86PS0825 | |



Wright Medical Technology, Inc.
1023 Cherry Road
Memphis, TN 38117
800 238 7117
901 867 9971
www.wmt.com

Wright Medical EMEA
Atlas Arena, Australia Building
Hoogoorddreef 7
1101 BA Amsterdam
the Netherlands
011 31 20 565 9060

Wright Medical UK Ltd.
Unit 1, Campus Five
Letchworth Garden City
Hertfordshire SG6 2JF
United Kingdom
011 44 (0)845 833 4435

™Trademarks and *Registered marks of Wright Medical Technology, Inc. DARCO® is a licensed trademark of Wright Medical Technology, Inc. ©2014 Wright Medical Technology, Inc. All Rights Reserved. 012752A_17-Jul-2015