

RESTORING LIFE

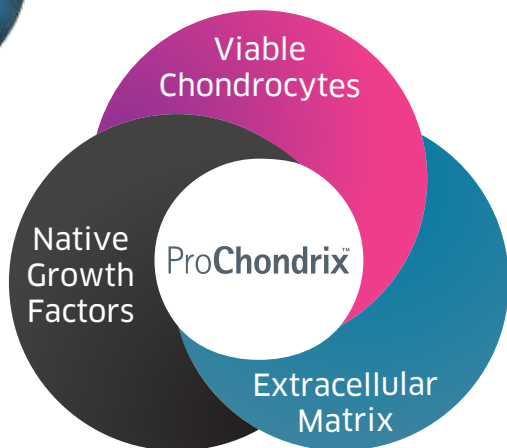
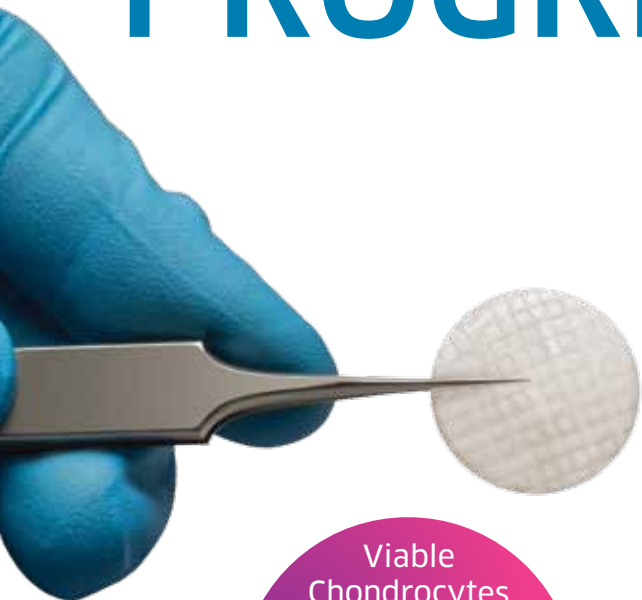
RETURNING TO AN ACTIVE LIFESTYLE IS
IMPORTANT TO YOU AND YOUR PATIENTS



ProChondrix[™]
Cartilage Restoration Matrix



PROGRESSIVE, EASY-



PROCHONDRIX™ IS A SINGLE-STAGE, NATURAL SOLUTION FOR PATIENTS IN NEED OF ARTICULAR CARTILAGE REPAIR

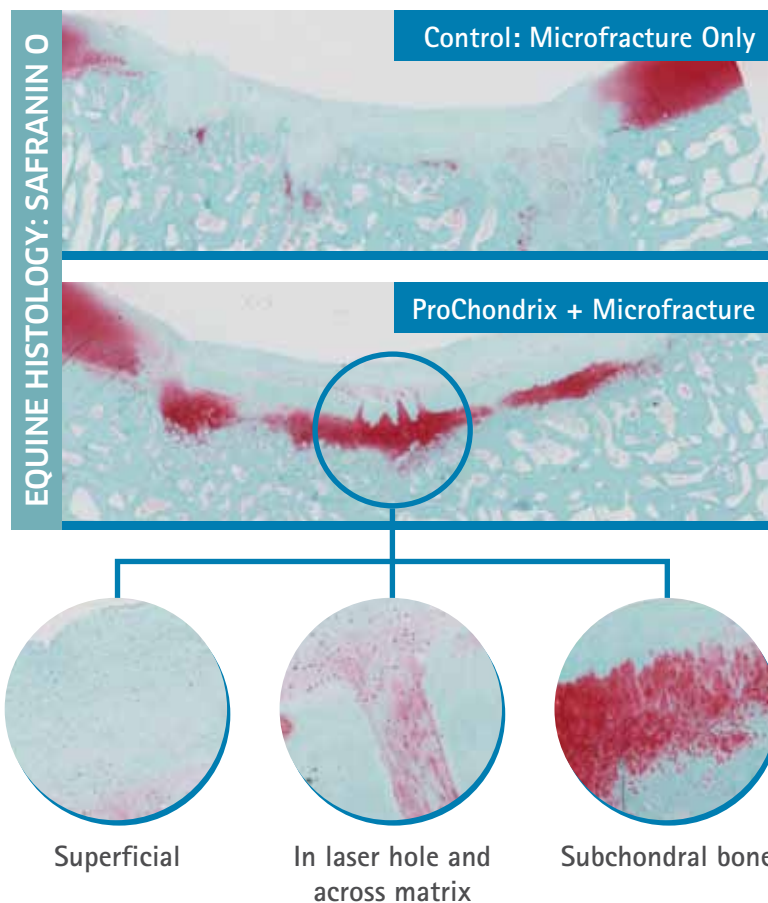
ProChondrix, a cellular 3D fresh cartilage matrix helps deliver the necessary components for cartilage restoration. This next generation of cartilage therapy provides live functional cells and other biological components which are necessary for repair and regeneration of damaged cartilage tissues.¹

- > The extracellular matrix helps support a structure for cellular migration and adhesion while preserving growth factors.¹
- > Presence of native growth factors help maintain healthy cartilage and facilitate chondrocyte functionality.¹
- > Viable chondrocytes are present and can aid in cartilage repair by generating extracellular matrix proteins that help promote chondrogenesis.¹

PROCHONDRIX STIMULATES NEW HYALINE CARTILAGE GROWTH

Cell migration and proliferation, along with integration between graft and host tissue, is essential for long-lasting cartilage restoration.

As evidenced by strong safranin O staining for GAG, ProChondrix demonstrated more cellular migration, proliferation and integration into host tissue as compared to the control, microfracture only.²



TO-USE AND COST-EFFECTIVE

ICRS CARTILAGE REPAIR ASSESSMENT

ICRS scoring is a macroscopic evaluation of cartilage repair techniques with evaluation criteria. ProChondrix received a perfect score.*



* ICRS Scoring for ProChondrix was performed by Laurie R. Goodrich, DVM, PhD, ACVS Diplomat, Associate Professor in Equine Surgery and Lameness, Colorado State University, Fort Collins, CO

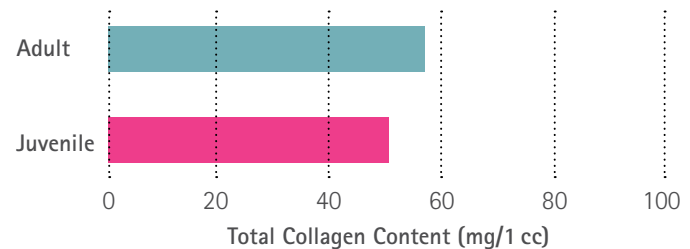
THREE MONTH REPORT IN EQUINE MODEL

ICRS Assessment	ProChondrix	Control: Microfracture
Degree of defect repair	In level with surrounding cartilage 4 of 4 points	25% repair of defect 1 of 4 points
Integration to border zone	Complete integration with surrounding cartilage 4 of 4 points	3/4th integrated. 1/4th with notable border > 1 mm 2 of 4 points
Microscopic appearance	Intact smooth surface 4 of 4 points	Small, scattered fissures 2 of 4 points
Total Points	12 out of 12	5 out of 12

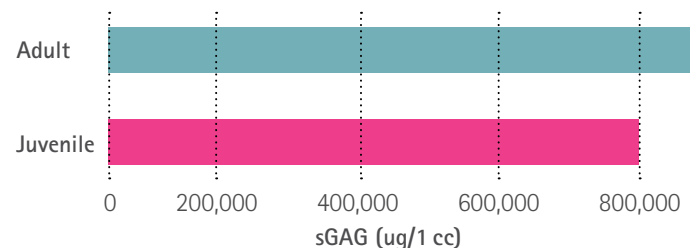
CELLULAR AND MOLECULAR ACTIVITY SURPASSES JUVENILE CARTILAGE AT 12 WEEKS:¹

- > Chondrocytes replicated faster from adult cartilage than those from juvenile cartilage.
- > At 12 weeks, ProChondrix showed more collagen content and sGAG than juvenile cartilage.

12 Week Collagen Content



12 Week sGAG



SIZING INFORMATION

ProChondrix™

PRODUCT CODE*	DIAMETER
725477010	7 mm
725479010	9 mm
725471110	11 mm
725471310	13 mm
725471510	15 mm
725471710	17 mm
725472010	20 mm

* 1 mm thickness (1.5 and 2.0 mm thickness available upon request)

> Shelf Life

28 days

> Storage Information

Stored in refrigerated conditions
(>0-10°C)



6278 S Troy Cir
Centennial, CO 80111

MAIN 720. 873. 0213
TOLL FREE 800. 557. 3587
FAX 720. 873. 0212

allosource.org
allograftpossibilities.org



AlloSource strives to deliver affordable, effective allografts for use in spine, sports medicine, foot and ankle, orthopedic, reconstructive, trauma and wound care procedures. We develop innovations that honor donors and progress healing by bridging the proven science of tissue allografts with advanced cellular technologies.

References

1. Data on file at AlloSource.
2. Data on file at AlloSource.

© AlloSource 2015

M8S0094.001 - 06/2015