

Prochondrix Freehand Technique

Equipment Required

Proper size Prochondrix atleast 2mm larger than estimated defect site

MicroFX Set, MicroFX Drill, MicroSculpting Open Currettes

Stryker CinchLock Knotless Anchor, Drill, and Drill guide-*This anchor is highly preferred over other ALL other knotless anchors for this procedure due to the superior control in tensioning.* Other “pound” in knotless anchors will have much less control, and could potentially rip through the matrix.

Suture- #1 Zipline UHMWPE and 1.2 Tyable Tape

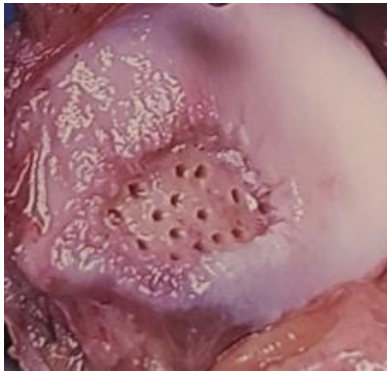
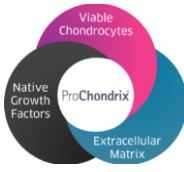
Fibren glue- There is a premixed 4ml Tisseel Glue your account can order that should do the trick. Ask them to order qty 2 for one case. (tisseel.com)

Procedural Walk Through

- 1) Gain unimpeded access to the defect cite. Matrix size should have been chosen based on the maximum length of the surface area for oblong defects. Possibly request slightly larger size.



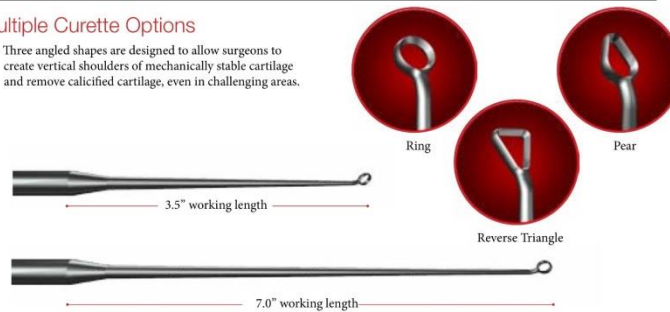
- 2) Prepare site using MicroFX drill with 5-6mm depth stop starting at the periphery and working inwards. Micro sculpting open currettes can help to prepare the peripheral adjacent cartilage. Attempt to create vertical cartilage wall.



Defect Preparation

Multiple Curette Options

- Three angled shapes are designed to allow surgeons to create vertical shoulders of mechanically stable cartilage and remove calcified cartilage, even in challenging areas.

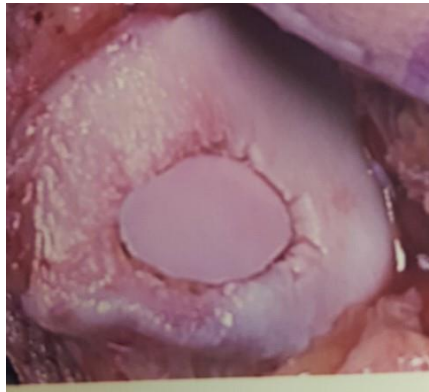


Depth Control

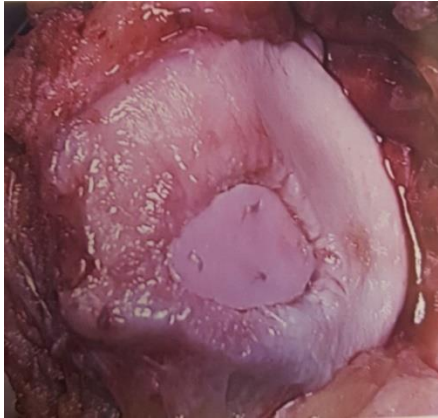
Universal snap caps in 4, 5, 6, and 7mm options allow surgeons to select the appropriate depth to stimulate marrow cells and blood flow to the defect site. The snap caps fit on all of the guide options.



- 3) Prepare the matrix using scissor or scalpel to accommodate the shape of the defect



- 4) Application of CinchLock anchors allow extreme control of matrix tensioning and leave a minimal footprint. 3-4 anchors evenly spaced is common.



- 5) Prepare fibrin glue per manufacturer recommendations. A 4ml Tisseel will take approximately 2-5 minutes to thaw in saline and will cover up to 16 square cm. Pat the implant site dry with laps prior to application. Start at the top of the defect so that if it drips, it will cover defect. Apply over entire graft and approximately 2-3mm over the adjacent cartilage. Allow 4-5 minutes for glue to polymerize.

2 months post-op

